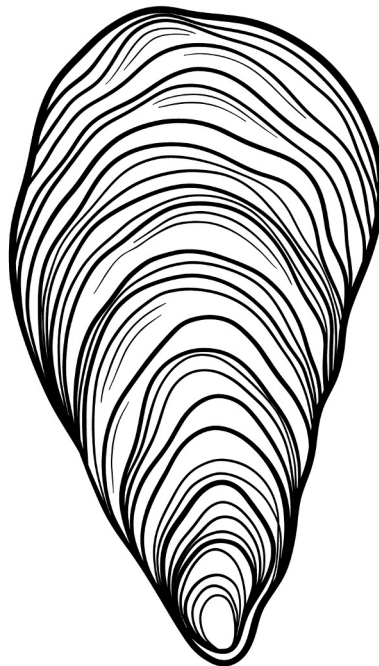


Sonja Weber Gilkey

***Uncoiling DNA through sculptural expression
with nautical rope and found objects.***



info@sonjawebergilkey.com
www.sonjawebergilkey.com



Kundalini Rising

Medium: Sisal

**Dimensions: H67" W16"
D5"**



Call on Your Kundalini Light Within

Medium: Sisal

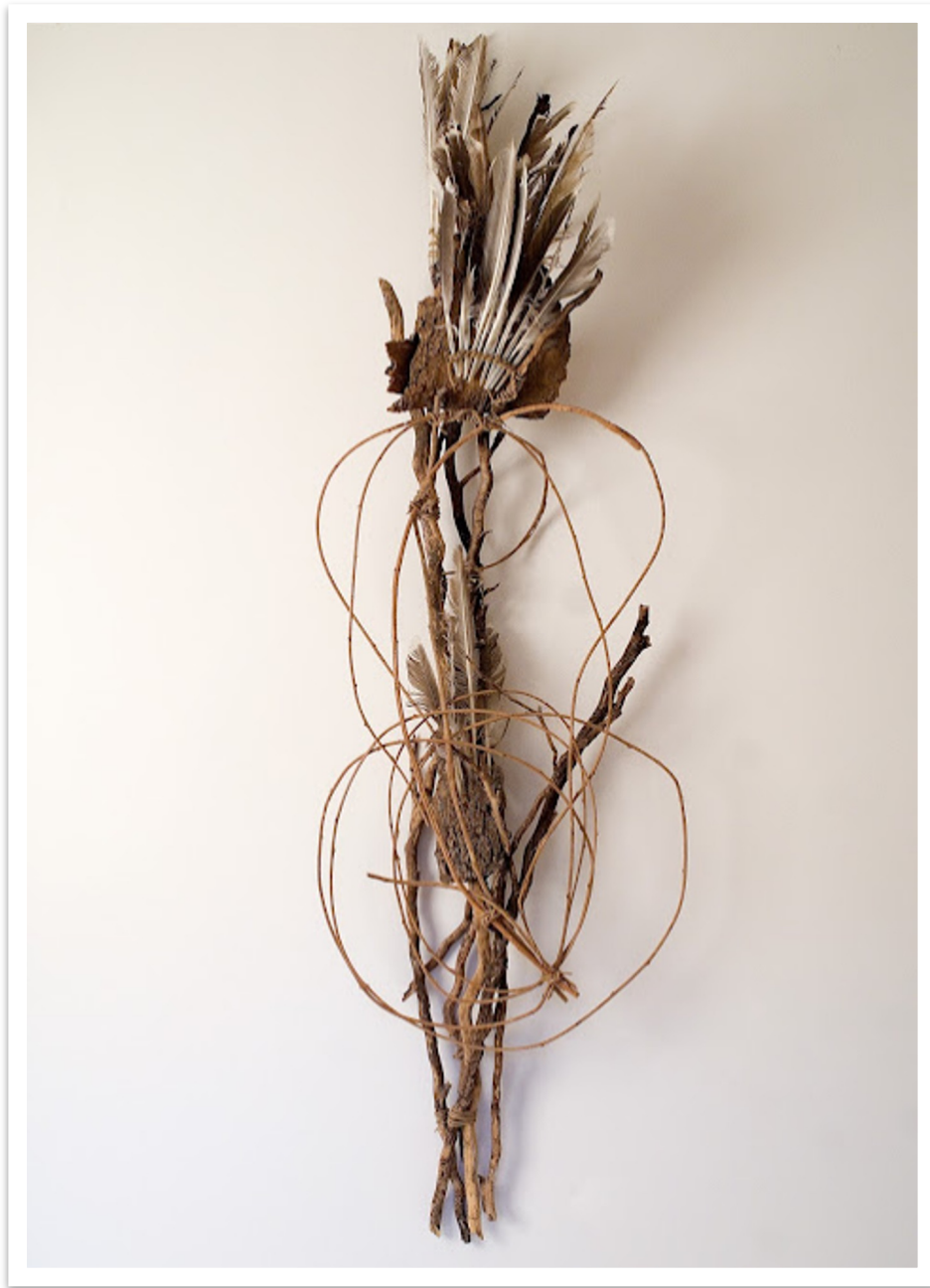
Dimensions: H60" W50" D10"



Michelle and Barrack

Medium: Sisal

Dimensions: H 57" W21" D10"



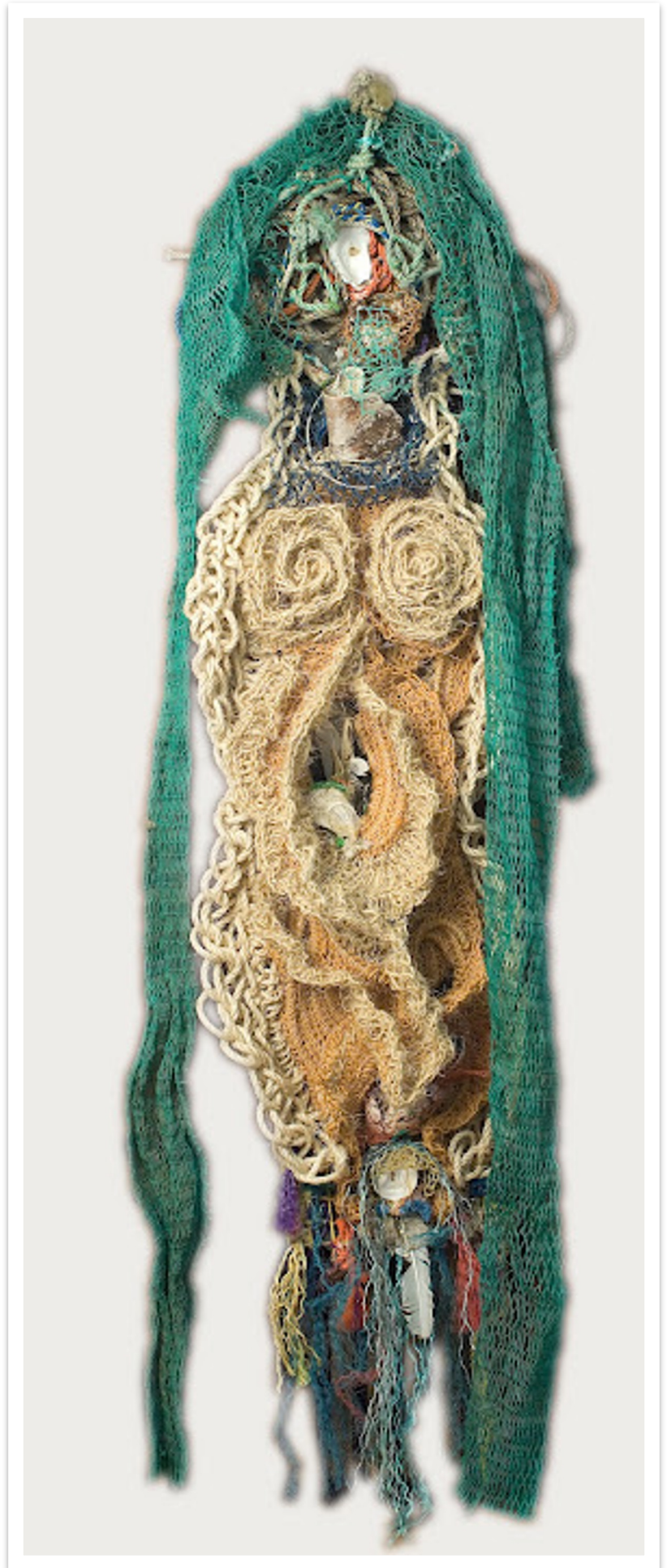
Sacred Chief I

Medium: Sticks and Feathers
Dimensions: H56" W19" D9"

Homage a Picasso

Medium:
Ropes and Found
Objects

Dimensions:
H96" W25" D14"



Les Ames En Route

Medium:
Ropes and Found
Objects

Dimensions:
H85" W24" D12"



**Maman
Haitienne**

Medium:
Ropes and Found
Objects
Dimensions:
H99" W20" D10"





Verleifde I

Medium: Sisal

Dimensions: H39" W31" D14"



Infinite Embrace I

Medium: Sisal

Dimensions: H53" W21" D7"



Cross Dedicated to Fishermen 1

Medium: Mixed Media

Dimensions: H55" x W29" x D9"

Cross Dedicated To Fishermen 2

Medium:
Mixed Media

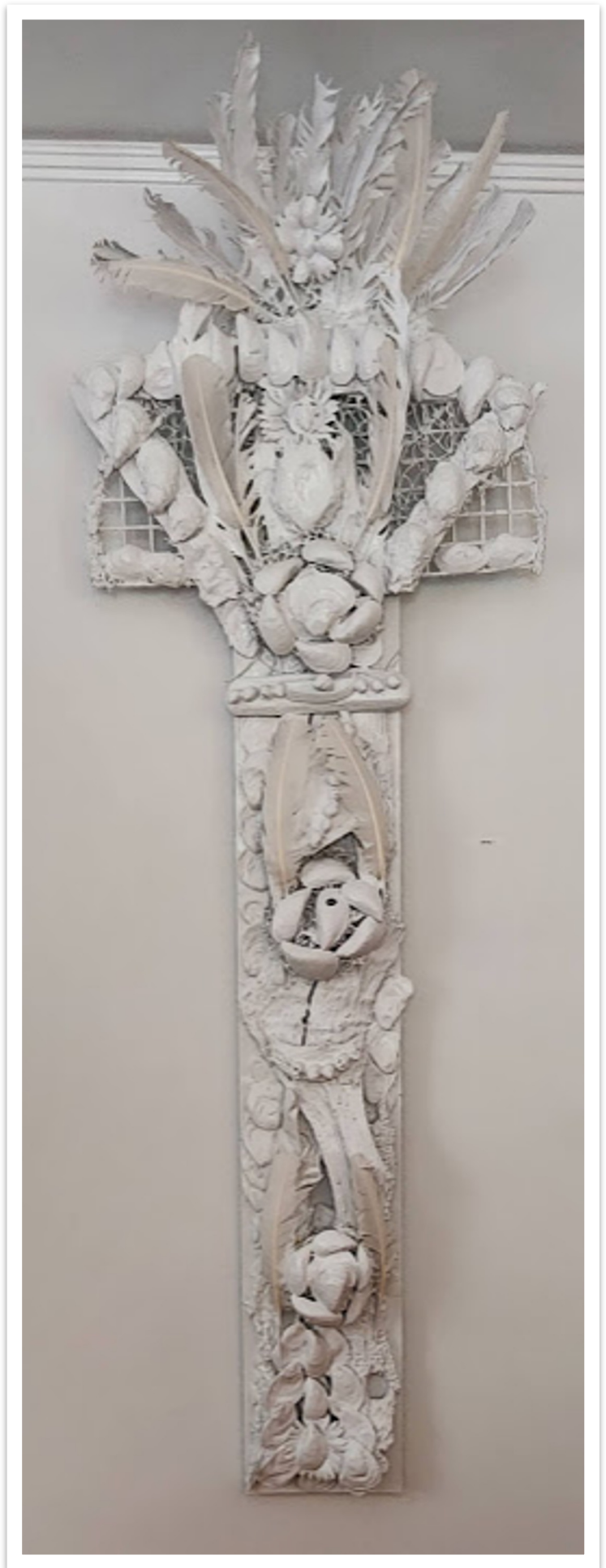
Dimensions:
H74" x W25" x
D11"



Cross Dedicated To Fishermen 3

Medium:
Mixed Media

Dimensions:
H70" x W28" x
D13"



ARTIST STATEMENT

My sculptures of rope and found objects are manifestations of our infinite souls on earth.

For me, rope sculptures are practical, sensual, meditative. The rope can be handled and transformed as one's daily manifestations of change. It is universal and used in all aspects of life.

Interwoven patterns of the rope can be seen as symbolic of the DNA strands that make up all of life. The results of these patterns are rope sculptures that represent a unique Universe. A Universe that is full of life.

Infinity. Life. Death. Rebirth.

I hope my works raise consciousness and awareness about how humanity's DNA is deeply interconnected to that of the oceans and how the beauty and fragile nature of the oceans need to be protected and celebrated.

Sat Nam

STATEMENT OF WORK

Sonja Weber Gilkey taps our relationship to the oceans' energy, breadth, and depth in sculptural form with rope, shells, feathers, and objects found on docks, boats, and along shorelines.

Incorporating her love for the sea, a commitment to Kundalini yoga with its manner of opening chakras, and a passion for telling a story of respect for those who work at sea, Sonja creates marine-inspired mixed-media sculptures that emphasize the importance of connection.

As she twines marine life, its ecology, and its symbolism with the terrestrial and spiritual manifestations of what it means to be a steward on our planet, she tells a story that asks viewers to contemplate their sense of purpose, connection, and responsibility to the natural world.

Sonja's style of abstraction allows each viewer the freedom to muse, dream, and interpret what is most meaningful to them. From her works of serious themes to those with child-like whimsy, Sonja attempts to create a visceral connection between the aquatic and amphibious worlds while weaving in spiritual affinities that extol the beauty of existence.

SONJA WEBER GILKEY

Sonja has pursued her love for sculpture and the natural world since childhood through college, raising her family and her career working at the United Nations.

Continuing her artistic journey Sonja has expanded her visual focus toward exploring form and movement through her sketches and pen and ink drawings.

Resume available on request.



info@sonjawebergilkey.com

www.sonjawebergilkey.com